

PREMIUM QUALITY MEATS



Family Pack, USDA Choice
Certified Angus Beef
**Boneless
Ribeye Steaks**

9.99
lb.



Family Pack, Boneless, Center Cut
Tenderized Pork Chops **2.19** lb.



1.89 lb.
Family Pack
**Boneless Country Style
Pork Ribs**
Fresh **Boneless Pork Stir Fry** **2.99** lb.



4.49 lb.
Family Pack, USDA Choice
Certified Angus Beef
**Boneless
Chuck Steaks**



4.99
40 Oz., Frozen
Regular or Rotisserie
**Tyson Boneless
Skinless Chicken Breast**



4.69 lb.



6.99
40 Oz., Frozen
Tyson Boneless Skinless Tenderloin



3.99
16 Oz.
Selected Varieties
**Jimmy Dean
Pork Sausage**



3/\$4
12 Oz.
**Bryan
Meat Wieners**



10.99
40 Oz.
**Smithfield
Hometown
Sliced Bacon**



2/\$5
12 Oz.
**Butterball
Turkey Bacon**



6.99
2 Lb.
**Sea Best
Tilapia Fillets**



5.99
12 Oz., 52-70 Ct.
**Best Choice
Cooked Shrimp**

20 Oz., Selected Varieties
**Hormel
Side Dishes** **2.99**

7-8 Oz., Selected Varieties
**Smithfield Prime Fresh
Sliced Deli Meat** **3.49**

18-24.6 Oz., Selected Varieties
**Mrs. Paul's
Breaded Fish** **5.99**

16 Oz., Selected Varieties
**Johnsonville Ground
Italian Sausage** **3.49**

10-14 Oz., Selected Varieties
**Nathan's Famous
Beef Franks** **4.79**

2.4-2.9 Oz., Selected Varieties
**Armour
LunchMakers** **5/\$5**

8-9.6 Oz., Selected Varieties
**Jimmy Dean Fully Cooked
Sausage Links or Patties** **3.99**

14 Oz., Selected Varieties
**Carolina Pride
Smoked Sausage** **2/\$5**

14 Oz., Selected Varieties
**Johnsonville Flame
Grilled Bratwurst** **3.99**

PRODUCE FRESH PICKS



Jif Fresh
**Peaches or
Nectarines** **3.99** lb.

4x5
**Vine Ripe
Tomatoes** **1.69** lb.

5 Oz.
Selected Varieties
**Organic Girl
Salad Blends** **3.99**

2 Lb. Bag
**Fresh
Lemons** **3.99**



Sunnys High Flavor
Imported
**Red or Green
Seedless Grapes** **2.69** lb.

3 Lb. Bag
**Cara Cara
Navel Oranges** **4.99**

5 Lb. Bag, Michigan
**Fuji, Jonagold,
Jonathan or
Gala Apples** **3.99**

Green Cabbage **2/\$1** lbs.



Fresh Cucumbers **2/\$1**

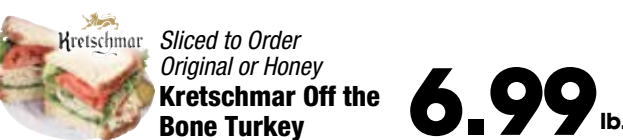
Extra Large
**Green Bell
Peppers** **69¢** ea.

7.5-7.7 Oz.
Selected Varieties
**Dole Just Add
Chicken Salad Kits** **2.99**

Fresh Avocados **69¢** ea.

Deli & Bakery

Not Available
at All Locations.



6.99 lb.



5.99 lb.



6.99 lb.



3.99



2/\$4



2.99



1.99



2/\$4



2/\$1



3.99
Community Coffee K-Cups
Selected Varieties, 12 Ct.



3.99
**Community Coffee
2x Caffeine K-Cups**
Selected Varieties, 10 Ct.



3.99
Community Coffee
Selected Varieties, 12 Oz.



1.99
**Community Coffee
Ready-To-Drink Espresso**
6.5 Oz.



piggly wiggly

We accept USDA Food Stamps.

MARKET *Fresh* GOODNESS
at AFFORDABLE PRICES

Hammond
18150 Hwy 190 • 985-345-7729
Mon-Fri 6am-10pm • Sat & Sun 7am-10pm

Independence
345 W. Railroad Ave. • 985-878-4306
Open Daily! • 7am-9pm



FAST FRIENDLY
SERVICE
**Rx Paul's
Pharmacy**
3 LOCATIONS:
Independence • 985-878-4401
Hammond • 985-345-7122
Loranger • 985-878-6622
All major insurances accepted for your convenience.
ATM Machine at all locations.



USDA Choice, Certified Angus Beef
**BONELESS
CHUCK ROAST**

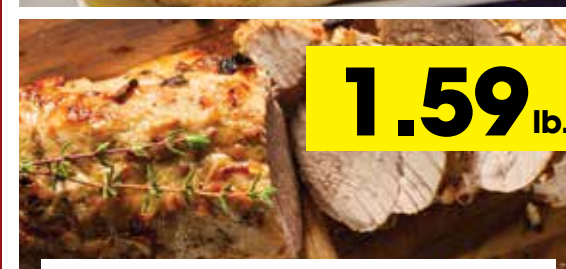
Family Pack, USDA Choice, Certified Angus Beef
Boneless Beef Stew Meat **4.99** lb.

Boneless Pork Loin Roast **1.79** lb.

Family Pack, Fresh
Ground Chuck Patties **2.99** lb.



1.99 lb.



1.59 lb.



2.49 lb.



2.99
16 Oz., Florida
**Sweet, Red Ripe
Strawberries**

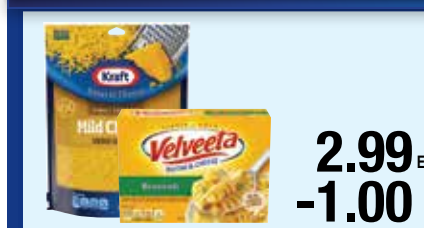


1.99
5 Lb. Bag
**Best Choice
Russet Potatoes**



3.99
3 Lb. Bag
**Halos
Clementines**

Buy 8 Save \$8 **SAVE \$8 INSTANTLY WHEN YOU PURCHASE ANY 8 PARTICIPATING PRODUCTS!**
ALL ITEMS MUST BE PURCHASED IN A SINGLE TRANSACTION



2.99 EA.
-1.00
1.99 EA.
WITH PURCHASE OF 8
PARTICIPATING PRODUCTS



2.99 EA.
-1.00
1.99 EA.
WITH PURCHASE OF 8
PARTICIPATING PRODUCTS



3.49 EA.
-1.00
2.49 EA.
WITH PURCHASE OF 8
PARTICIPATING PRODUCTS



2.79 EA.
-1.00
1.79 EA.
WITH PURCHASE OF 8
PARTICIPATING PRODUCTS



3.99 EA.
-1.00
2.99 EA.
WITH PURCHASE OF 8
PARTICIPATING PRODUCTS



3.99 EA.
-1.00
2.99 EA.
WITH PURCHASE OF 8
PARTICIPATING PRODUCTS



3/\$5
Campbell's Chunky Soup
Selected Varieties, 15.25-18.8 Oz.



2/\$3
Best Choice Salad Dressing
Selected Varieties, 16 Oz.



10/\$10
**Campbell's Chicken Noodle
or Tomato Soup**
Selected Varieties, 10.75 Oz.



3/\$9
Nestlé Pure Life Water
24 Pk./5 Liter Bottles or 24 Pk./8 Oz. Bottles



1.39
Best Choice Croutons
Selected Varieties, 5 Oz.



2/\$5
Frito-Lay Ruffles
Selected Varieties, 8.5-9 Oz.



3/\$10
Coke Products
Selected Varieties, 8 Pk./12 Oz. Bottles



3/\$10
Coke Products
Selected Varieties, 10 Pk./7.5 Oz. Mini Cans



3/\$4
Coke Products
Selected Varieties
2 Liter Bottle



3.99
Powerade Water
Selected Varieties, 6 Pk./1.5 Liter Bottles



2/\$5
**Little Debbie Fruit Pies,
Cupcakes or Brownies**
Selected Varieties, 12-14.3 Oz.



2/\$4
**Little Debbie Valentine Snacks
or Bagged Donuts**
Selected Varieties, 7.56-11.09 Oz. or 10 Ct.



4.99
P.J.'s Coffee Pods
Selected Varieties, 12 Ct.



2/\$5
Eggland's Extra Large Eggs
Grade A, Dozen